



## WATER CONSERVATION

### Water Conserving

**1.28 GPF**

**AC Powered Flush Valve (Closet)**

**Model**

**H8-128 (AC)**

➤ **Description**

AC Powered, Sensor Operated, Exposed, **Water Conserving**, Closet Flush Valve for floor mounted or wall hung top spud bowls.

➤ **Flush Cycle**

• **Model H8-128 (AC)**

AC Powered (1.28 GPF)

**Note:** Flush Valves may not function with all bowls. Be sure to verify flow requirements with bowl manufacturer.

➤ **Specifications**

Exposed, Piston Operated, Chrome Plated, Closet Flush Valve with the following features:

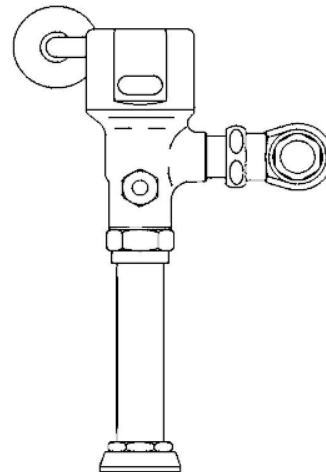
- Standard Brass/Chrome Plated All Metal Construction
- Superior, Slow-Closing, Piston Flushing Mechanism
- Standard Manual - Mechanical Override Button
- Field adjustable to Left or Right Rough-In
- Operating Pressures: 10 – 125 PSI
- Standard Self-Cleaning Filtering System
- Superior VSI Silicone Elastomer Piston Seals are Unaffected by Chlorine, Chloramines and Ammonia.
- ADA Compliant - Infrared Sensor operated for "No Hands" operation
- Reliable, Latching Solenoid Valve
- Preset / adjustable Sensor Distance
- Adjustable Tailpiece
- 1" I.P.S. Angle Stop Valve with vandal resistant cap
- High Back Pressure Vacuum Breaker / Flush Tube Connection
- Spud Coupling and Flange for 1-1/2" Top Spud
- Sweat Solder Adapter with Cover Tube and Wall Flange
- High Copper, Low Zinc Brass Casting for Dezincification Resistance
- 24 hour Sentinel Flush
- Plug-In Power Adapter Furnished as Standard

➤ **Electrical Specifications:**

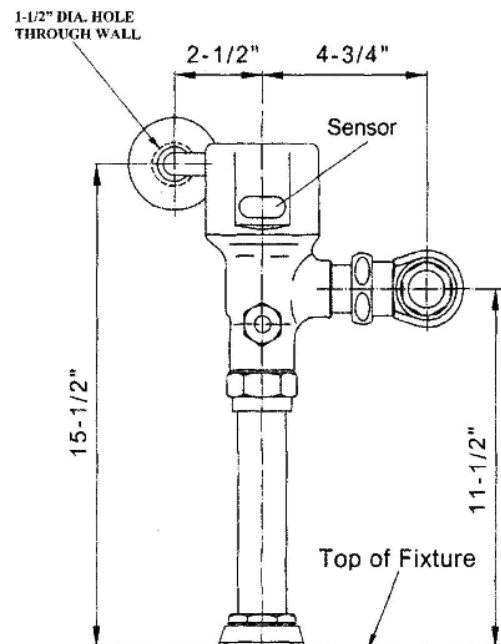
- Plug-in Power Adapter  
Input: 120V AC (60 Hz), Output: 12V DC
- Solenoid Valve and Sensor, 6V DC

➤ **Optional Accessory:**

- HC-010 Multi-Unit Transformer (Powers up to 8 Flush Valves up to 100 Feet).



**Model H8-128 (AC)**



**HYDROTEK INTERNATIONAL, INC.**

**Phone: 800-922-9883**

**Fax: 407-647-0471**

**www.hydrotekintl.com**

