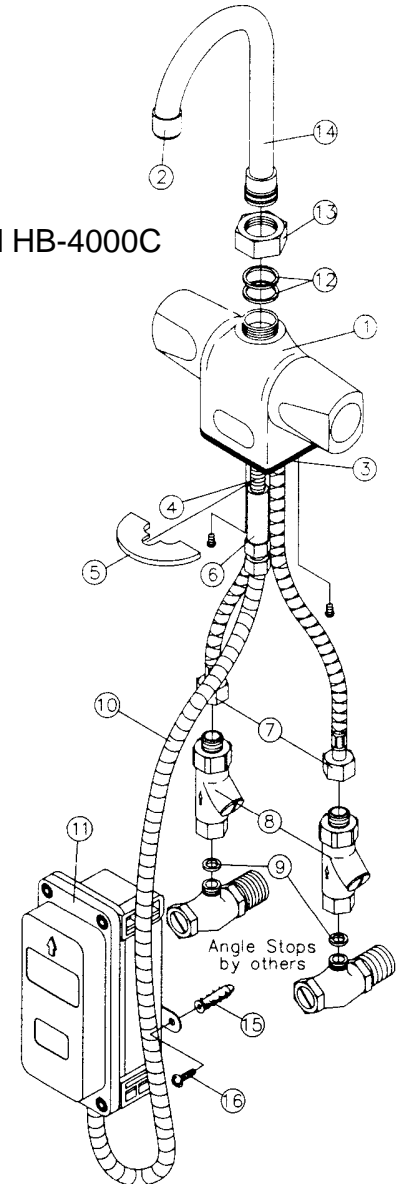


INSTALLATION INSTRUCTIONS

Hydrotek Mixing Automatic Faucet w/ Manual Control (Battery Powered)

1. Prior to installing this faucet, thoroughly flush all water lines and replace stop washers, if necessary.
2. To ensure proper operation, " DRY TEST " the faucet by plugging the Sensor Eye Cable connector (10) into the matching connector on the PC board inside the Control Box (11). Pull out the PC board for easier access. Install batteries into Battery Holder and plug Battery Holder output connector into its corresponding connector on the PC board. Place your hands in front of the faucet's Sensor Eyes. If there is a clicking sound, the faucet is activating properly. If not, call the factory.
3. After successful "DRY TEST," unplug the Sensor Eye cable and Battery Holder connectors from the PC board.
4. Attach the hot and cold water Supply Tubes (7) by screwing threaded ends into the bottom of the faucet body. (Note: Teflon tape is not required for supply tube connections to faucet body.) **CAUTION: DO NOT USE PIPE DOPE.**
5. Position faucet by lowering flexible Supply Tubes (7) and Control Cable (10) through deck hole. Secure faucet to sink deck using Mounting Washer (5) and Mounting Nut (6).
6. Considering the length of the Control Cable (10), drill two holes into the wall and insert Mounting Anchors (15). Position Control Box (11) so that the Control Cable (10) enters control box from the bottom. Attach the control box to the wall by aligning box mounting holes with mounting anchors using Anchor Screws (16).
7. Attach In-line Filter/Check Valves (8) to stop valves using Nylon Washers (9) inserted into filter inlet. Attach Supply Tubes (7) to Filter/Check Valve compression fittings. Left is the supply tube "HOT." Right is the supply tube "COLD." The filters may be cleaned by using a screwdriver to open the cleanout trap and removing the screen. **DO NOT USE PIPE DOPE. USE TEFLON TAPE ONLY.**
8. Mount Gooseneck Spout (14) onto the faucet using the Lock Nut (13) and Nylon Split Washers (12). Open stop valves and test faucet using manual control and check for leaks. Set water temperature using the control handle on the right side of the faucet.
9. Connect electrical cables as described in STEP #2. Control cable must be seated in the control box properly to maintain waterproof seal. Reinstall Control Box cover.
10. Test faucet by placing hands under spout. Water should begin to flow. Water flow should stop when hands are removed. If the faucet does not function properly, refer to the troubleshooting guide.
11. Sensor Distance (SDA) is factory preset. If you need to alter this setting, please call Hydrotek.

Model HB-4000C



Part Number Descriptions	
1. Faucet body	9. Nylon washer
2. Laminar flow outlet device, 2.0 GPM	10. Control cable
3. Gasket	11. Control box
4. Mounting bolt	12. Nylon split washer (2) for spout
5. Mounting washer	13. Lock nut for spout
6. Mounting nut	14. Gooseneck spout
7. Supply tube (2)	15. Mounting anchor (2)
8. Filter/Check Valve (2)	16. Anchor screw (2)

HYDROTEK INTERNATIONAL, INC.
5055 Forsyth Commerce Rd. , Ste. 124
Orlando, FL 32807
1.800.922.9883 (Phone)
1.866.670.5580 (Fax)
www.hydrotekintl.com